



CONSUMER PRODUCT SERVICES

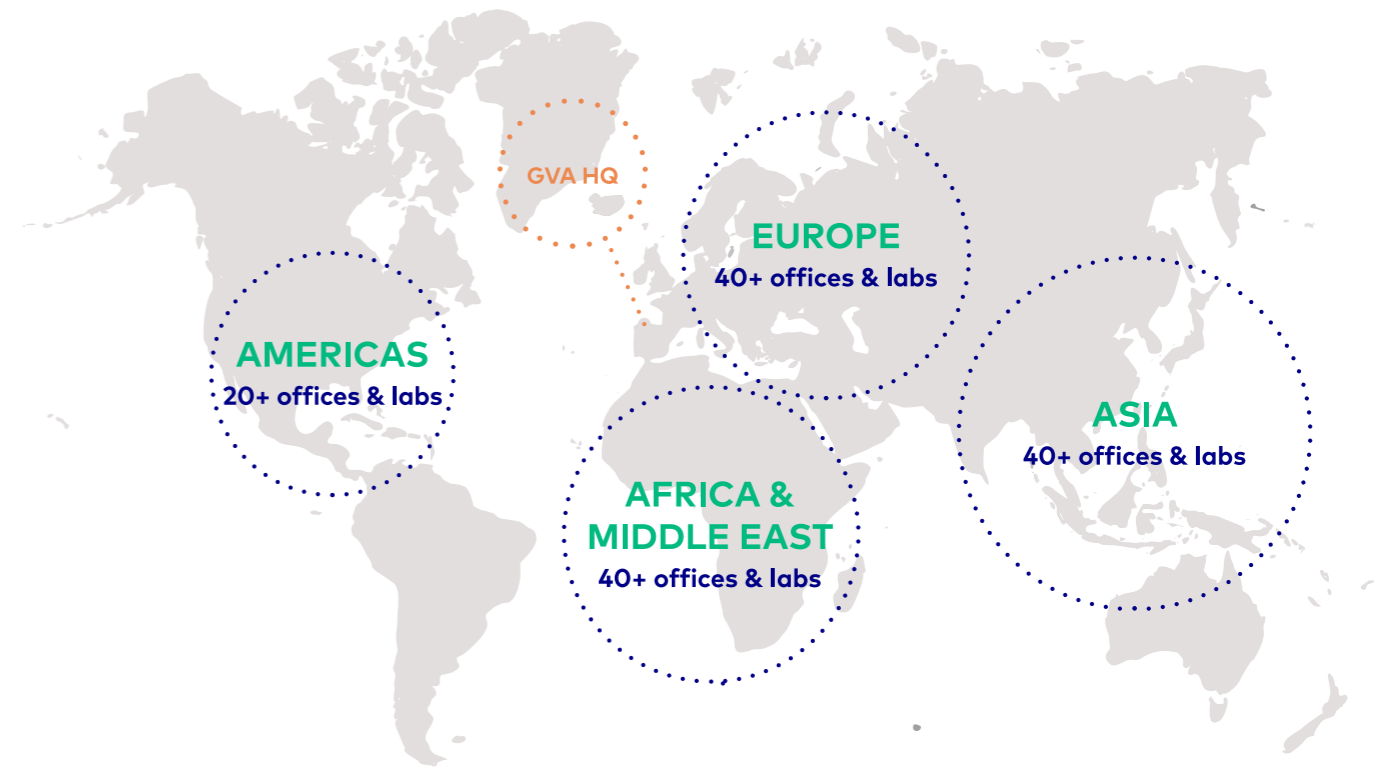
COTECNAA

Cotecna is a global provider of testing, inspection & certification services.



Cotecna's network of experts ensures that your products conform to your specifications and any relevant standards for a wide range of consumer goods, including **softlines, hardlines, electrical and electronic products.**

We help you guarantee that the **quantity, specifications, measurements, materials, and visual appearance** of your product complies with your order. We also verify that packaging, labelling, instructions and markings are in accordance with mandatory standards, and that your supplier operates to contractual requirements.



DREAM DARE DELIVER

We aim to be your **essential partner** for TIC services. We differentiate through technical expertise, innovation, proximity and reactivity.

We behave as **challengers**. We take risk to build our company and offer you solutions tailored to your needs.

Our credibility lies with our ability to respond to **our customer promise** and execute our development plan.

140+
offices
& labs

7,000+
employees

50
countries

OUR SCOPE OF SERVICES

TESTING

Our global network of accredited laboratories carries out a full range of testing and analysis in accordance with specifications, protocols, and standards. Typical types of testing and analysis are:

- > Chemical/Restricted Substances
- > Physical/Electrical
- > Safety
- > Reliability
- > EMC
- > Radio Frequency
- > Energy Efficiency



INSPECTION

Cotecna offers Inspection services through its global network. We deliver accurate services through our expert teams and cutting-edge technology, helping customers meet all necessary quality, safety, and sustainability standards.



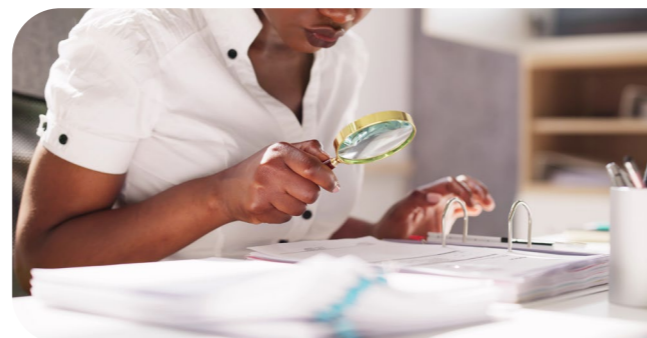
CERTIFICATION

Management System Certification schemes combined with Product Certification help customers to prove that they have the right quality systems to produce reliable and fit-for-purpose products that conform with global and local standards and regulations.





AUDIT

We carry out Auditing services throughout the entire supply chain, from sourcing of raw materials, qualifying manufacturers, ascertaining technical capabilities, to verifying environmental, social, and governance compliances.



TESTING

Our team of technically qualified, trained, and experienced professionals are capable of evaluating a wide scope of consumer products:

-  Softlines
-  Leather & Footwear
-  Hardlines
-  Toys & Juvenile Products
-  Furniture
-  Food Contact Materials
-  Electrical & Electronics

TESTING

SOFTLINES TESTING



Softlines Testing helps you ensure that your softline products comply with local and international safety, quality, and sustainability guidelines and meet market demands. We provide extensive testing services for a variety of softline products.

PRODUCTS

- > Accessories
- > Activewear
- > Apparel
- > Curtains
- > Fabric
- > Linens
- > Soft Home Furnishing
- > Towels

TESTING

- > Physical and Mechanical Testing
- > Chemical and Microbiology Testing
- > Materials Testing
- > Food Contact Testing
- > Flammability Testing

LEATHER & FOOTWEAR TESTING



Our testing services ensure that your **leather & footwear products** are of the highest quality and in compliance with international standards. We test leather and footwear products and provide design evaluation in different types of environments to prevent premature wear. We also have a separate team to advise on product improvements wherever needed, as part of technical consultancy and support.

TESTING

- > Durability Testing
- > Bond Adhesion and Attachment Strength Testing
- > Components and Accessories Testing
- > Colorfastness
- > Waterproof Properties
- > Restricted Substance List (RSL) Testing
- > Safety Footwear Testing
- > EU Directive Testing
- > Mold Prevention Solution

TESTING

HARDLINES TESTING



Hardlines Testing ensures that your hardline products comply with safety and quality standards. Product testing can greatly reduce the risk of recalls from various government agencies both locally and abroad. This in turn builds trust with end-users.

PRODUCTS

- > Bed and Mattress
- > Houseware
- > Home Décor
- > Packaging (incl. ISTA)
- > PPE
- > Sport and Leisure
- > Stationery and Office Supplies

TESTING

- > Physical and Mechanical Testing
- > Chemical Testing
- > Materials Testing
- > Safety Testing
- > Flammability Testing
- > Performance Testing

TOYS & JUVENILE PRODUCTS TESTING



This category of testing ensures that **toys and juvenile products** are safe, of good quality, free from harmful substances and are of verified designs. We conduct safety testing, analysis and experiments on all product parts, components, materials and finished products, in accordance with international and local standards and regulations including US CPSIA, EU Toy Directive, China GB, Gulf GCC, etc.

TESTING

- > Physical and Mechanical Testing
- > Chemical and Microbiology Testing
- > Safety Testing
- > Flammability Testing
- > Performance Testing

TESTING

FURNITURE TESTING



Furniture Testing is applied to determine the safety, durability, strength, and stability of furniture products. We also conduct chemical testing, including Volatile Organic Compounds (VOC) analysis and nuisance odours identification, to ensure that all the materials used in furniture construction and finish comply with regulations and requirements. All these build consumer trust and promote sustainability of your products.

TESTING

- > Physical and Mechanical Testing
- > Chemical Testing
- > Flammability Testing
- > Surface Resistance and Finishing Testing
- > Wood Based Material Testing
- > Textile Testing
- > Performance Testing

FOOD CONTACT MATERIALS TESTING



FCM Testing covers all materials intended to come into contact with food products throughout the supply chain. FCMs play a key role in food safety, and testing these products helps to ensure that FCMs do not alter the food's organoleptic characteristics or release hazardous substances, thus compliant with regulations governing target markets.

MATERIALS

- > Plastic
- > Paper and Paperboard
- > Bamboo
- > Stainless Steel
- > Metals and Alloys
- > Ceramic
- > Other FCMs

TESTING

- > Migration Testing
- > Residual Content Analysis
- > Detection of Non-Intentionally Added Substances (NIAS)
- > Organoleptic Analysis
- > Extractable and Leachable
- > Biodegradability and Compostability

TESTING

ELECTRICAL & ELECTRONICS TESTING



Electrical and Electronics Testing is carried out to ensure product safety, durability, and functionality. It helps manufacturers and suppliers confirm that their products meet regulatory safety requirements and build trust and improve credibility with final consumers.

Our labs are capable of testing your products in accordance with international and prevailing local standards and regulations such as IEC, EN, ANSI, US/CAN, and other specific requirements and protocols.

PRODUCTS

- > Batteries
- > E-Mobility
- > Home Entertainment Electronics
- > Household and Similar Equipment
- > Installation Accessories
- > IT and Office Equipment
- > Lighting
- > Medical Devices

TESTING

- > Safety Testing
- > EMC Testing
- > RF Testing
- > Chemical Testing
- > Energy Efficiency Testing
- > Reliability & Environment Testing

CHEMICAL TESTING

Chemical Testing is increasingly applied to various consumer products, including textile and apparel, footwear, hardlines and toys, and electrical and electronics. It is used to determine the composition of materials and detect whether they contain hazardous and toxic substances such as heavy metals, PAHs, and Phthalates. This helps manufacturers and suppliers ensure that their products meet regulatory safety requirements and protect the health of consumers and the environment.

REGULATIONS

- | | |
|--------------|------------|
| > REACH | > FHSA |
| > RoHS | > TSCA |
| > WEEE | > CPSIA |
| > EN71 | > CCPSA |
| > CA Prop 65 | > EN 13432 |



INSPECTION

Our team of technically qualified, trained, and experienced professionals carries out impartial and objective quality inspections throughout the entire production chain:

- IPI** **INITIAL PRODUCTION INSPECTION**
 We check the raw materials or components stored by the manufacturer to produce an order. We also inspect the initial production run at the factory.
- DPI/ DUPRO** **DURING PRODUCTION INSPECTION**
 We verify semi-finished or finished goods when a minimum of **40%** of an order has been produced.
- PSI** **PRE-SHIPMENT INSPECTION**
 We carry out qualitative and quantitative assessments in the warehouses or places where cargos are loaded for shipments.
- FRI** **FINAL RANDOM INSPECTION**
 We control finished products when at least **80%** of an order has been export-packed.
- LS** **CARGO CONTAINER LOADING SUPERVISION**
 We ensure that an order is completed and safely loaded in a container before shipment.

FULL COVERAGE OF SERVICES

Cotecna helps customers verify contractual conformity for a comprehensive range of products in every stage of the supply chain with speed and accuracy. Our Inspection teams are strategically and conveniently positioned across the world.



WE ALSO OFFER:

- > 100% Inspection/Sorting Inspection
- > Fabric Inspection
- > Supplier Verification/Supplier Quality Verification Program
- > Pre-shipment Inspection
- > Factory Quality Audit

CERTIFICATION

Cotecna's global network of experts provide assessments against a wide range of certification schemes to ensure that your management systems and products meet required international, regional, and national standards and requirements:

MANAGEMENT SYSTEM CERTIFICATION
 Management System Certification helps you demonstrate the quality of your management systems and processes. Ensuring compliance with applicable national and international standards.

- > ISO 9001 Quality Management System
- > ISO 14001 Environment Management System
- > ISO 45001 Occupational Health and Safety Management System

SUSTAINABILITY
 Sustainability Certification demonstrates your commitment to good environmental, social, governance practices, giving you advantages in the market especially when entering a new market.

- > Textile Exchange
- > China Green Product
- > GOTS Global Organic Textile Standard
- > Forest and Paper Products: FSC®, CFCC
- > ISO 14064 Greenhouse Gas Verification
- > ISO 14067 Carbon Footprint of Products



AUDIT

Our second-party auditing services help you to ensure that your supplier's competence, compliance and capabilities are able to meet your requirements and needs.

FACTORY AUDIT
 We provide assessment of a manufacturer's Quality Management System (QMS) and perform surveillance audits of their production processes.

SUPPLIER QUALIFICATION
 We evaluate your supplier's performance against quality compliance standards and requirements. The main objective is to ensure that your supplier is capable of producing goods on time and to the required quality.

CORRECTIVE AND PREVENTATIVE ACTIONS ASSESSMENT
 We assess that CAPA system procedures that address the requirements of the quality system regulation have been put in place.

ESG AUDIT
 We verify that health, safety, environment, and corporate social responsibilities practices are inline with standards and compliance with local laws and regulations of a supplier.

- > SA8000
- > SLCP
- > SMETA**
- > ICS**
- > SCI**
- > WRAP**
- > ICTI**
- > C-TPAT/ Security Audit**
- > amfori's Speak for Change SCGM**

*Sub-contracting ***



COTECNA LABS FOR CONSUMER PRODUCTS

The Cotecna Group includes over **140 offices** and laboratories across over **50 countries**. Our network covers all the major trade routes and continents enabling timely customer support and quick request turnaround time. We offer consumer products testing through the following global network of laboratories:



ACT Lab

Headquartered in USA

- > Chemical Testing
- > Product Testing
- > Audit & Consultation
- > Bicycle Testing
- > PPE Testing
- > Sport/Leisure Testing



Toby

Headquartered in China

- > Safety Testing
- > Chemical Testing
- > EMC Testing
- > Wireless Testing
- > Performance Testing



Geo-Chem (India)

Headquartered in India

- > Safety Testing
- > Design Evaluation
- > Inspection & Audit
- > Regulatory Testing
- > Performance Testing
- > CPSIA Compliance Testing



Wimpey Laboratories

Headquartered in United Arab Emirates

- > Chemical Testing
- > Performance Testing
- > Safety Testing
- > Energy Efficiency Testing



Neutron

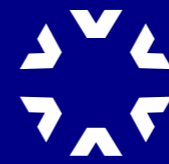
Headquartered in Italy

- > Food Contact Migration Testing
- > Cosmetic Testing

WHY COTECNA

What sets Cotecna apart is our one-stop-shop solutions that are tailored to your needs, delivered through easy and pleasant customer experiences:

- > One-stop-shop TIC solutions throughout the entire supply chain
- > Global network of advanced laboratories and experienced experts
- > In-depth regulations knowledge and industrial expertise
- > Tailored services by reliable and friendly staff taking your perspective



SUSTAINABILITY

At Cotecna, we're dedicated to being the essential TIC partner for our customers. Our commitment to sustainability is woven into our business through the implementation of our Sustainability Framework, which encompasses 6 key pillars:

- > Ethics & Governance
- > Environmental Impact
- > Health & Safety
- > Suppliers
- > Fair Labour
- > Communities

To discover more about our sustainability efforts, visit: [Cotecna Sustainability](https://www.cotecna.com/sustainability)



CONTACT DETAILS

COTECNA GROUP HQ

**Avenue Peschier 41, CH – 1206
Genève P.O. Box 6155, 1211
Geneva, Switzerland**

T: +41 22 849 6900

E: cotecna.geneva@cotecna.com

WIMPEY LABORATORIES

Headquartered in Dubai, UAE

**Warehouse 1 & 2, Wimpey Building,
Plot No: 364-8730,
Al Quoz Industrial Area 1,
Dubai, UAE**

T: +971 4 327 3123

E: info.dxb@wimpeylab.com

Wimpey Laboratories – Abu Dhabi

T: +971 2 550 3324

E: info.auh@wimpeylab.com

NEOTRON

Headquartered in Modena, Italy

**Stradello Aggazzotti,
104, 41126, Modena, Italy**

T: +39 059 461711

E: customercare@neutron.it

GEO-CHEM

Headquartered in Gurugram, India

**306, Udyog Vihar, Phase II,
Gurugram, India – 122016**

T: +91 124 625 0500

**E: sales.insp@geochem-cp.com
sales.testing@geochem-cp.com**

Geo-Chem – Dubai

T: +971 4 882 0527

E: cps.dubai@geochemglobalae.com

ACT LAB

Headquartered in Long Beach, USA

**5280 East 59th Street
Long Beach, CA 90805, USA**

T: +1 562 470 7215

E: info@act-lab.com

ACT Lab – Suzhou

T: +86 512 5323 0300

E: info@act-lab.com

ACT Lab – Taichung

T: +886 4 2569 1456

E: info@act-lab.com

ACT Lab – Long An

T: +84 28 3620 0641

E: info@act-lab.com

ACT Lab – Prague

T: +420 226 203 440

E: info@act-lab.com

TOBY

Headquartered in Shenzhen, China

**1/F, Building 6,
Rundongsheng Industrial Park,
Baoan District, Shenzhen,
Guangdong Province 518126,
P. R. China**

T: +86 755 2650 9301

E: toby@cotecna.com.cn

Toby – Pingshan

T: +86 755 2868 1363

E: toby@cotecna.com.cn



COTECNA

